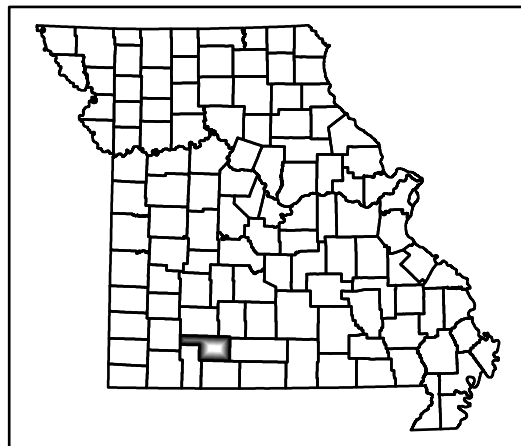
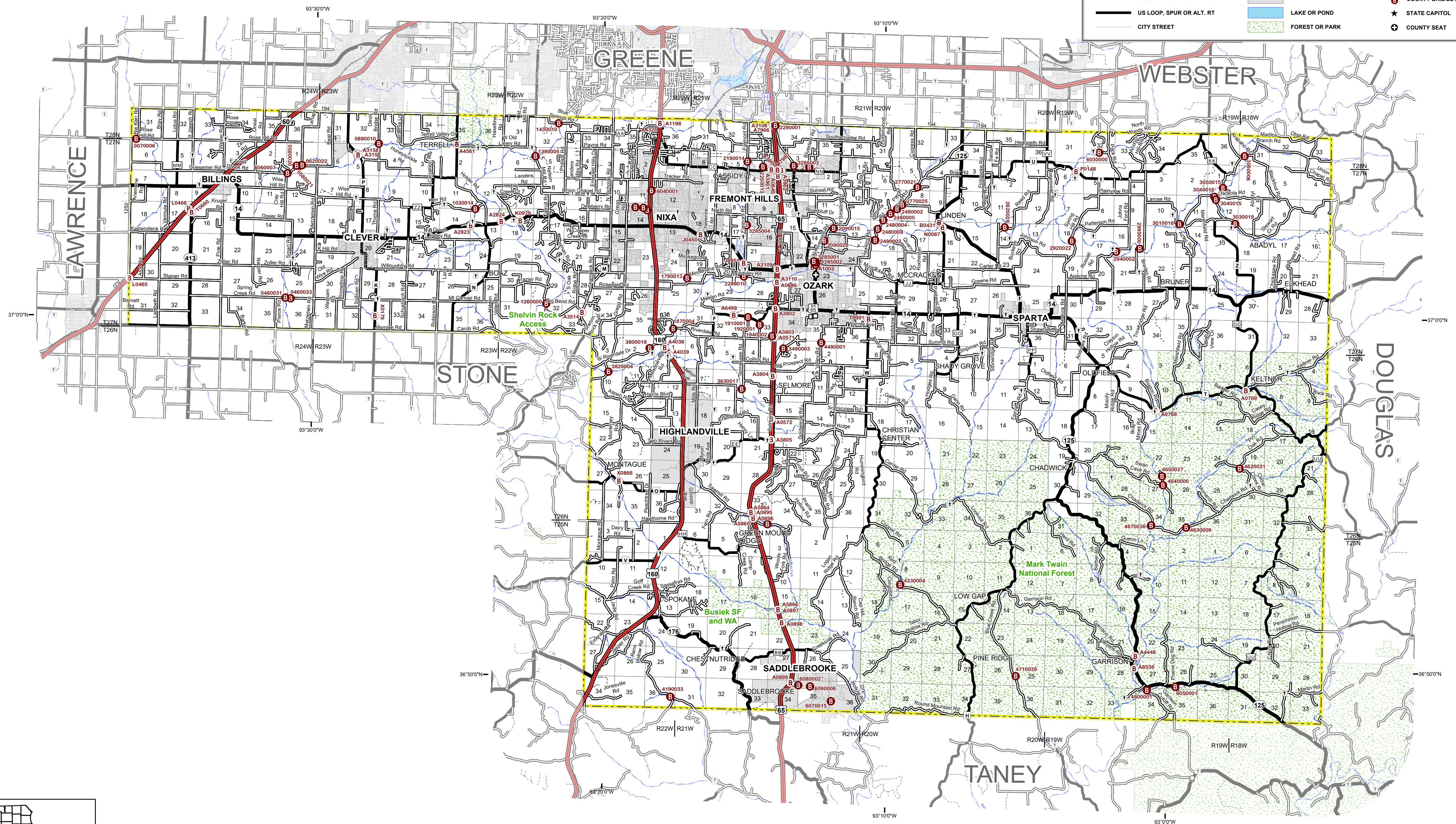


- |                           |                       |                              |
|---------------------------|-----------------------|------------------------------|
| INTERSTATE                | PRIVATE OR OTHER ROAD | AIRPORT                      |
| INTERSTATE LOOP           | KATY TRAIL            | HOSPITALS                    |
| US HIGHWAY                | RAILROAD              | CEMETERY                     |
| US HIGHWAY (DIVIDED)      | RIVER OR STREAM       | OTHER CITIES AND TOWNS       |
| STATE NUMBERED HIGHWAY    | SECTION LINE          | MODOT SHED                   |
| STATE LETTERED HIGHWAY    | COUNTY BOUNDARY       | STATE BRIDGE (STRUCTURE ID)  |
| COUNTY ROAD - 807.4 MILES | CITY LIMIT            | COUNTY BRIDGE (STRUCTURE ID) |
| US LOOP, SPUR OR ALT. RT. | LAKE OR POND          | STATE CAPITOL                |
| CITY STREET               | FOREST OR PARK        | COUNTY SEAT                  |



**GENERAL HIGHWAY MAP**  
**CHRISTIAN COUNTY**  
Prepared by MoDOT  
Transportation Planning Division

County No. 22  
District SW

Scale  
0 1 2 3 4 Miles

Revised - June 2025